

ITScript Net® - Bluetooth Printing

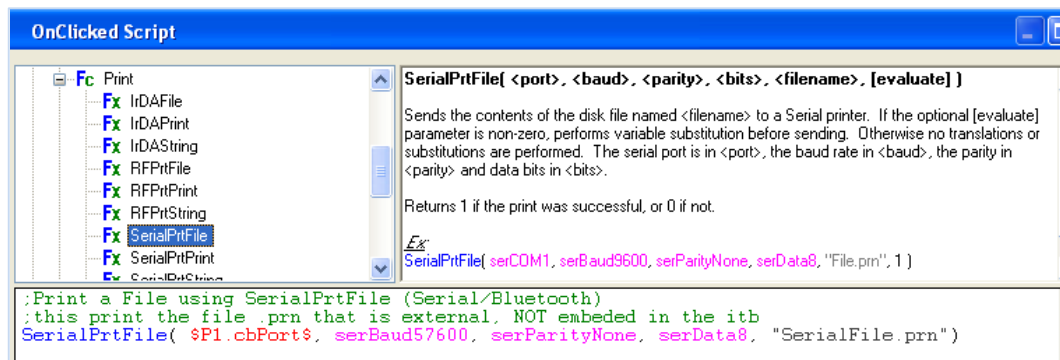
~~~~~

The mobile device must be paired to the Bluetooth printer with the assigned COM port. For each mobile device and printer model, this pairing is different; please consult your hardware user manuals for this setup.

## Sample print code for data collection programs:

**PrtFile** - in the ITScriptNet program, in the Print button's On-Click event, where the first parameter of the function (shown here as "serCom7") must be the COM port assignment:

**Print a File using SerialPrtFile (Serial/Bluetooth) - the print file .prn is external, NOT embedded in the itb**  
`SerialPrtFile(serCom7, serBaud57600, serParityNone, serData8, "SerialFile.prn")`



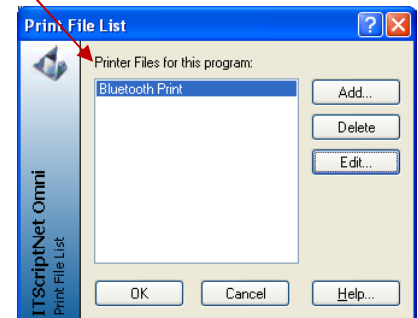
**PrtPrint** - in the program's Print button's On-Click event, where the first parameter of the function (shown here as "serCom7") must be the COM port assignment:

**Print PrintFile using SerialPrtPrint - this calls the print files embedded in the itb**  
`SerialPrtPrint(serCom7, serBaud57600, serParityNone, serData8, "Bluetooth Print")`

To place the printer code into the ITScriptNet program: Open your existing label in Notepad. This should show the Printer command language which tells the printer how to render the label.

Copy and paste that code into an ITScriptNet Print File:

- In the ITScriptNet Designer, click on the Program menu item, then Print Files;
- Select Add and create a named print file (here it is named "Bluetooth Print"), and paste the code...



Add <0D><0A> to each line (see sample below). These are the Hex representations of Carriage Return and Line Feed characters. These need to be added to take the place of the carriage returns in the label because they are interpreted by notepad and not transferred during the copy and paste step.

The appropriate text in the code must be replaced by variables which refer to your Prompt.Elements in the program. These are the \$PromptName.ElementName\$ variables or @UserVariable@. Using these variables in place of the text allows ITScriptNet to do substitutions at the time of printing.

Create a Print button element in your ITScriptNet program. The `SerialPrtPrint` function is used in the button to send the Print File over the specified Com Port. Bluetooth printing uses virtual serial ports which can be setup on the devices.

Example print code:

# ITScript Net® - Bluetooth Printing

~~~~~

```
! 0 200 200 600 1<0D><0A>
JOURNAL<0D><0A>
CONTRAST 0<0D><0A>
TONE 0<0D><0A>
SPEED 3<0D><0A>
PAGE-WIDTH 400<0D><0A>
BAR-SENSE<0D><0A>
; // PAGE 0000000004000600<0D><0A>
BT 0 0 4<0D><0A>
B 128 1 0 60 87 380 $Prompt1.tBarcode$<0D><0A>
BT OFF<0D><0A>
;/{ {BEGIN-BT<0D><0A>
T 7 0 109 167 $Prompt1.txLine1$<0D><0A>
T 7 0 109 187 $Prompt1.txLine2$<0D><0A>
T 7 0 109 207 $Prompt1.txLine3$<0D><0A>
T 7 0 109 227 $Prompt1.txLine4$<0D><0A>
T 7 0 109 247 $Prompt1.txLine5$<0D><0A>
;/{ {END-BT<0D><0A>
BOX 21 48 388 122 4<0D><0A>
BOX 20 50 388 563 4<0D><0A>
T 5 2 81 62 Sample Label<0D><0A>
PRINT<0D><0A>
```

