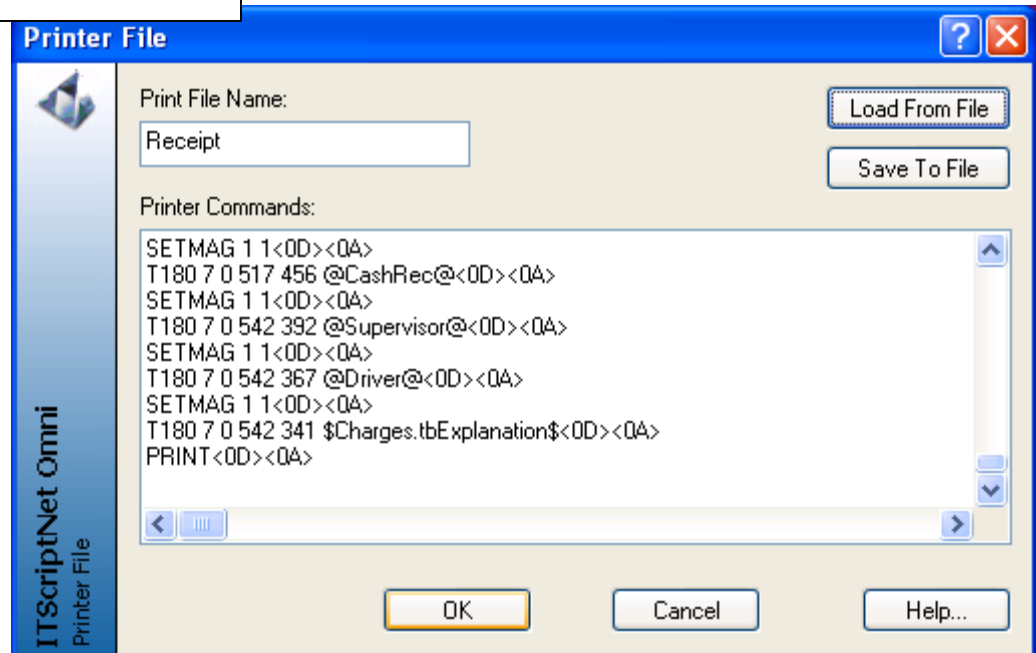
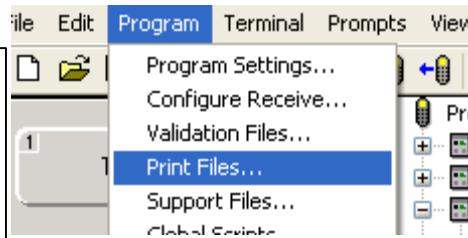


In the ITScriptNet-designed program, open the Program menu, select Print Files. Name the file with a simple filename.

Click the Load from file button.

Select the prn file created from the export of Labelview.  
Click ok.



In the ITScriptNet-designed program, in the script for the print button, select the SerialPrtPrint function from the Print/Other list.

For the print file, use the filename just created above (the screen shot below has a different file name, you would use the one you create.)

