

# ITScript Net® & Windows7+

This Guide is provided as a courtesy regarding security which Microsoft added to Windows 7 and above and Microsoft server 2008 and above.

## First, a note about 64-bit:

ITScriptNet will install and work fine on 64-bit Windows, as long as you are careful about how you interface to external data and programs. When installing ITScriptNet to a 64-bit Windows PC, install to the x86 folder.

### Note:

ITScriptNet runs in 32-bit mode. The basic reason for this is that we don't need the larger address space available in 64-bit Windows, and there is a performance penalty associated with 64-Bit.

Secondly, you have to be careful about ODBC data sources and .Net assemblies in 64-bit:

#### ODBC Data Sources

If you use an ODBC DSN to communicate with a database, be sure to create it with the 32-bit ODBC Administrator. 32-Bit applications can only see 32-Bit DSNs, and 64-bit applications can only see 64-bit DSNs. You will also need the specific 32-bit driver for your particular database.

#### .Net Assemblies

If you have a VBScript (either a post-processing script, or a Remote Script) that calls into a COM-callable .Net assembly, make sure the assembly is marked 32-Bit Only. It is possible that you could run into other issues, but these are the potential issues which have been identified so far.

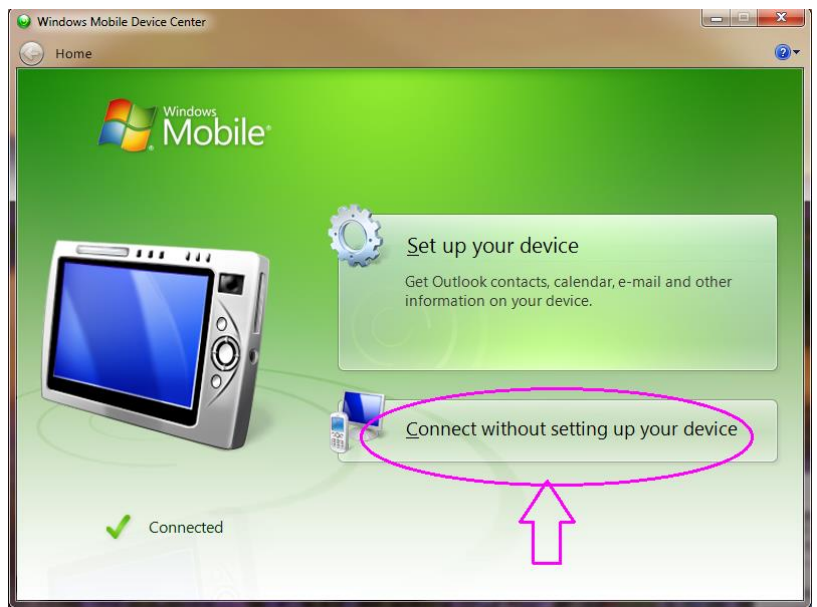
## Microsoft's Device Synchronization Software:

In Windows7, 8, and Microsoft Server 2008+, the synchronization software is called **Mobile Device Center+** (whereas in XP it was called **ActiveSync+**). The ITScriptNet software still refers to the Microsoft Sync software as **ActiveSync+**, but applies to both ActiveSync and Mobile Device Center.

Microsoft's Mobile Device Center should already be available on your PC, but you won't see a shortcut until a mobile device is connected to the computer for the first time; then Windows will automatically run the installation of Mobile Device Center and install the device's drivers.

Note . Windows will look like it has stopped running; please be patient as the first connection to the device and the installing of the drivers may take a few minutes. There will be an icon in the Windows task tray for Mobile Device Center which will indicate that it is still running.

After the Mobile Device Center has connected to the device, a green window will pop up on your computer's screen. *Even though the lower left corner says "connected", **you must still click on the "Connect without setting up your Device" button** in the Windows Mobile Device Center window.* If your device is not connecting or if data is not transferring over this sync connection, check that you've clicked on that large button.



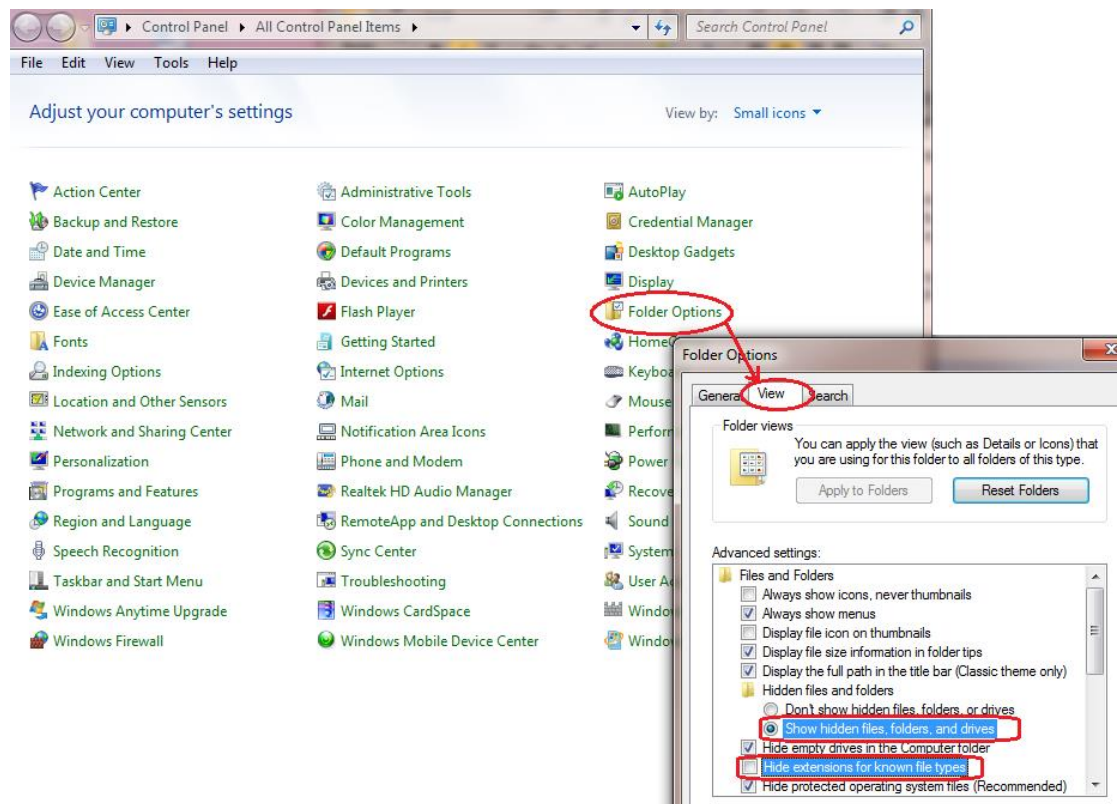
## New security features in Windows 7+, and Microsoft Server 2008+,:

Microsoft has added new security features starting with Windows7, along with a slightly different file structure than was in Windows XP. Important to note:

- Windows7+ will ***not allow other software to write to the C:\Program Files*** folder. The ITScriptNet software can be installed to C:\Program Files, but ***your ITScriptNet-designed data collection program file (.itb) must NOT be located at C:\Program Files***. In Windows7+, there is a new directory, %C:\ProgramDATA+ which can be used as a data destination, or save data to a designated folder outside of C:\Program Files such as in its own folder at the root of C.
  - **ProgramDATA** - If you do not see a Windows folder as %ProgramDATA+, unhide your Windows files in Windows\Folder Options.
  - **Autodownload** . if you are running an older version of ITScriptNet which uses the Autodownload Server, please note that this communications method will not run in Windows7+ without additional installation steps. Please download the detailed how-to guide from this link: <http://www.z-space.com/kb/Article.aspx?ID=10246>
  - **Omni server/service** - runs well in Windows 7+. See the ITScriptNet User Guide for more information.
- In Windows 7+, even though you are logged into the computer as an administrator, **you are not an administrator by default**. If an exe will not run, then right-click and select %Run As Administrator+.

## To View File Extensions in Windows 7:

If your computer does not display the file extensions for your files or the hidden ProgramDATA folder, you can reset the folder options in the Windows control panel:



Technical support is not included with the purchase of custom programming nor software licenses. Support time is purchased separately as needed. Troubleshooting issues with migrating software to Windows 7+ systems must be covered under prepaid support time. Please contact your hardware distributor to purchase. Please review the Support Agreement: <http://www.z-space.com/pdfs/Z-SpaceStandardSupportContract.pdf>