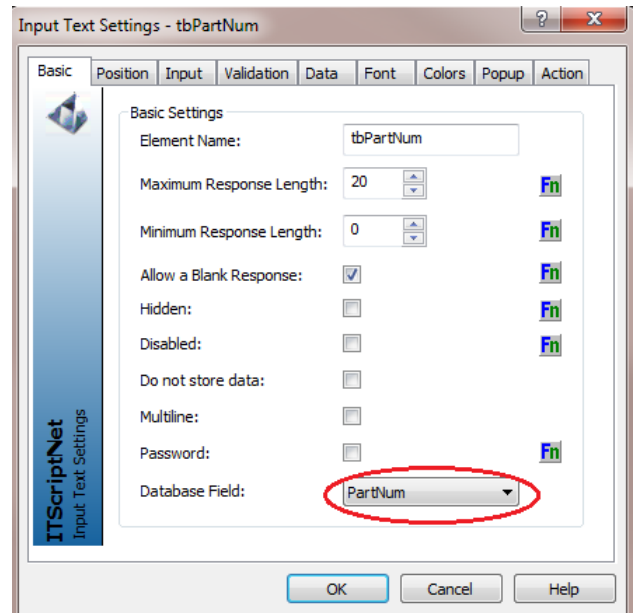


Two Elements ~ Save to the SAME Output Field

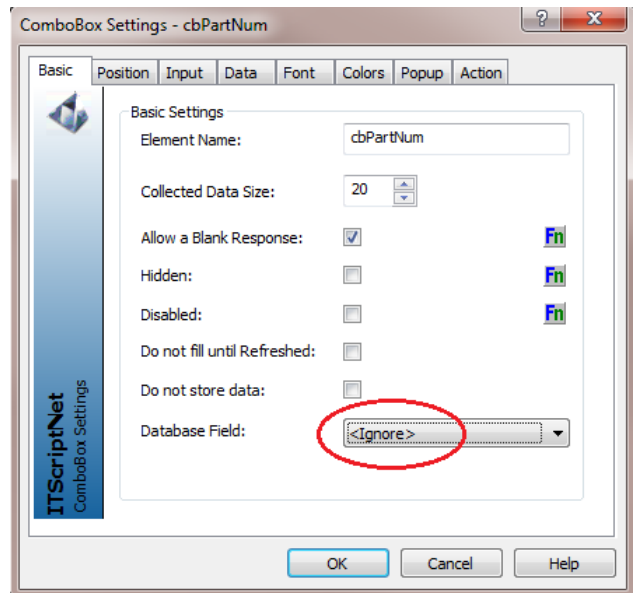
Data collected in two separate elements cannot be saved to the same output field; one will overwrite the other. This may occur where two similar elements need to be saved to the same output field for the particular collected record.

This example shows how to set one program element to another, to allow for saving a single program element to the single output field.

The first instance of the field, in this example is PartNum, is set to the database field as shown circled in red at right. If your data is saving to a csv or text file, then the designated field name would be typed in.



Then, in the subsequent instance for the output file field will be set to ignore (or left blank).



In this subsequent prompt, button onclick or other appropriate script window, set the value of the subsequent instance to the first field, for saving:

```
;set the subsequent instance of the field to the first field for saving  
$Prompt1.tbPartNum$ = $Prompt2.cbPartNum$
```