

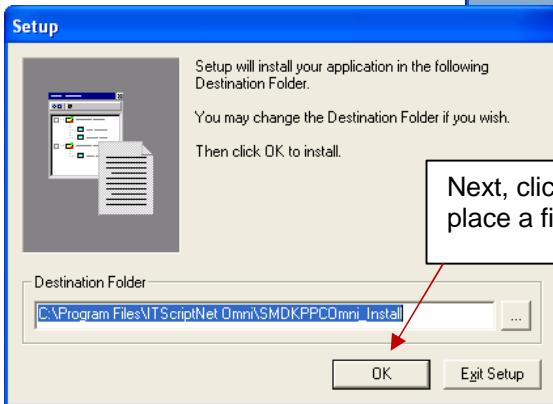
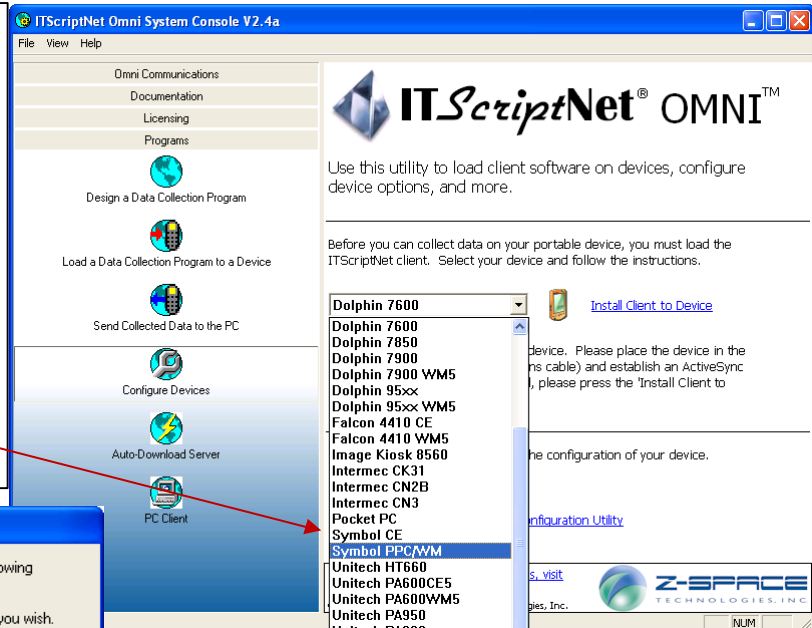
ITScript Net® - PLUS & OMNI™

Motorola/Symbol~~Client Install Directory

Applies to ITScript Net® Versions 2.4 & earlier *

The ITScriptNet client for the Motorola/Symbol devices must be installed to the **Application folder** on the mobile device.

From the ITScriptNet System Console, select the correct *Symbol* client for your hardware, whether a Windows CE device, or a PPC/WinMobile.

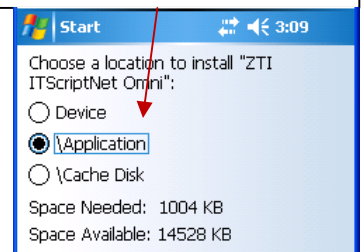
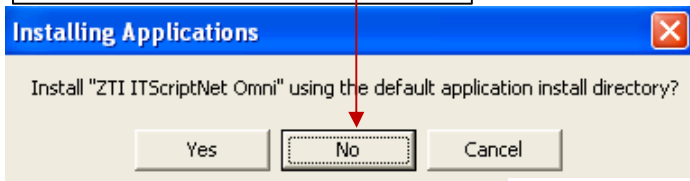


Next, click OK to allow the Setup to place a file on the C-drive.

ON THE COMPUTER:
Click **NO** -- do not use the default directory for installation.

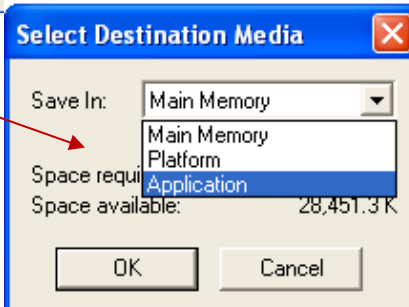
Your Motorola/Symbol will display one or the other

ON THE DEVICE:
Select **Application** -- do not choose the default device directory.



Next, select **Application** from the Save-In drop-down list.

Click OK, and the software will continue installation on the Symbol.



*Starting with ITScriptNet Version 3.0, the client will automatically install to the Application store.