

## ***Product Information Letter***



# **Batch™ - Data Collection Software**

March 14, 2005

### **Introduction**

Z-Space presents ITScriptNet® - Batch Developer data collection design and communication software. Batch provides our single prompt design environment that allows the user to create data collection programs that collect one piece of data per screen using 8 lines of text. Batch also manages the communications between the PC and terminals. This allows the solution provider to concentrate on the integration challenges.

### **Overview**

The ITScriptNet - Batch design environment has a visual interface that provides users with a graphical view of how the program will function. The software's integrated simulator feature provides program simulation within the design environment, allowing for functional testing and refinement prior to deployment. Testing the application before it is deployed helps ensure proper functionality and reduces the cycle time associated with implementation.

ITScriptNet - Batch supports data collection via keypad input, barcode scanning, and image capture. The image feature is perfect for capturing digital photos of signatures and image data to document damage claims, condition of equipment, and more.

With its power, flexibility, and ease-of-use, ITScriptNet - Batch may be used to create a wide range of data collection solutions for inventory control, asset management, warehousing, retail, meter reading, document tracking, production tracking, and more!

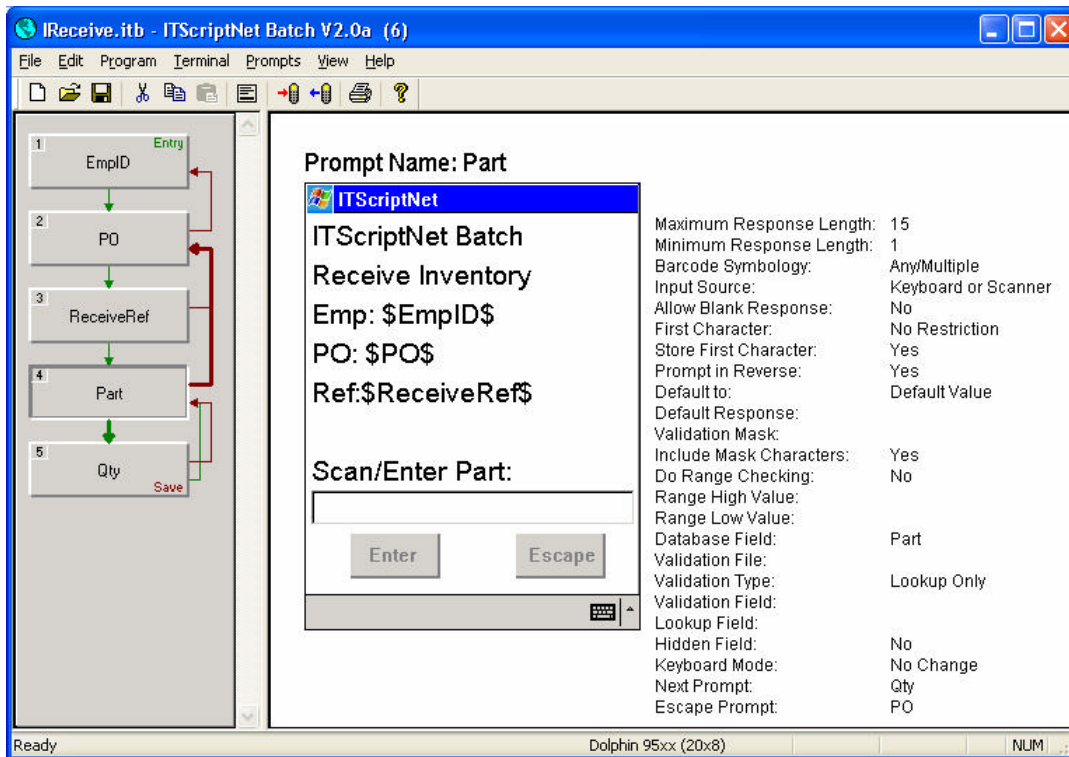
### **Benefits and Features**

*Cross Platform* – Solution providers and value added resellers will save development time by creating applications that will run on all ITScriptNet supported batch terminals, including Pocket PC devices running Pocket PC 2002 and higher, and WinCE devices running CE 3.0 and higher. Applications written for one batch terminal can run on other terminals; write it once, run it on all terminals. Supported terminals included:

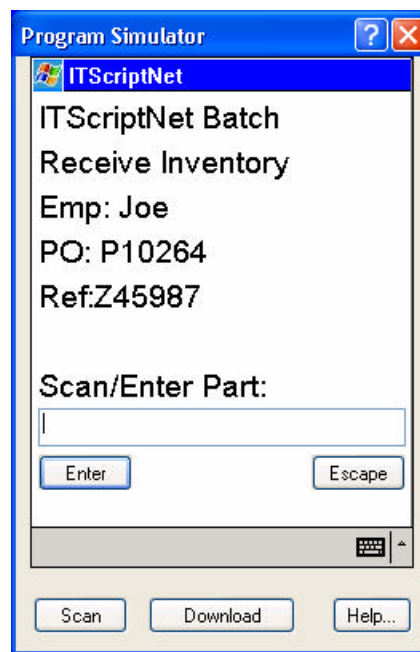
Hand Held Products – Dolphin® 7200, 7300, 74xx, 95xx, and 79xx  
Compsee, Inc. – MAT 203/204 and Apex III/IV

Devices running PocketPC or WinCE that are not directly supported will treat scanned input as if it were keyboard entered if using scanwedge.

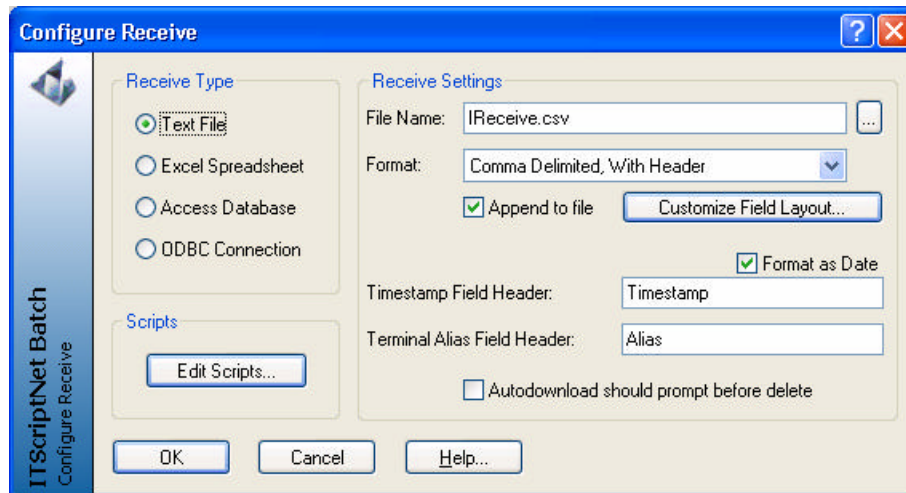
*Program Designer* – IT Managers won't have to allocate highly trained developers to create applications. The program designer provides a graphical user interface that makes designing data collection applications quick and easy.



*Program Simulator* – IT Managers will save development time by testing data collection applications before deployment. The program simulator feature of ITScriptNet - Batch simulates the data collection application on a PC.



*Export to Different File Formats* - Data collected can be exported into a text file Microsoft Excel, Microsoft Access, or through an ODBC connection, eliminating the need to import or perform additional processes.



*In-Prompt Scripts* – Users can create intelligent interactive applications with conditional branching, user-defined variables, variable text display, and much more.

*Data Processing Using Scripts* – Applications created with ITScriptNet - Batch Designer collect and process uploaded data with functions using VBScripts to integrate data collected with other applications or back-end systems.

*Transparent Host PC based licensing model* – With the Software license key there is no need for a separate port for a hardware dongle. The installation and activation of the software is done in an easy and user-friendly manner.

### **Product Positioning**

ITScriptNet – Batch is positioned as a powerful program generator and communication server for the supported devices. The software's advanced features and functionality will optimize automatic data collection solutions while minimizing development costs and deployment time. Batch is designed to be used by VAR's, system integrators and end users. Though programming training and experience is not required for most areas of the software, experienced programmers will find the true power and endless possibilities within the software's scripting capabilities.

Save time deploying applications: Solution providers and IT Managers also save time with the script simulator feature. This feature enables users to test applications before loading on to the terminals, so equipment deployment is always a guaranteed success.

- Simplify application development: Create applications without the need for embedded tools like eEmbedded Visual Tools or any compiler programs. ITScriptNet - Batch eliminates the need to write, debug and compile code. The intuitive visual interface works as an instructional wizard to guide the user through the steps needed to create the application.
- Optimize resources: ITScriptNet - Batch is designed for novice computer users and highly experienced software developers alike. ITScriptNet - Batch has useful examples and a complete user's guide that will quickly bring novice programmers up to speed. This intuitive programming allows users to choose from different levels of complexity to create the appropriate application for the end user.

- Capture more sales opportunities: Allows value added resellers and solution providers to shift their valuable resources from costly software development to selling solutions, products, and services. IT Managers also benefit, as they are able to shift resources to other software projects, sustaining, or other critical areas, thus improving department responsiveness and productivity.
- Separate Runtime version: End-users don't have to buy the full designer version of ITScriptNet – Batch to upload data collected from the terminals in the field or remote locations. The runtime version of ITScriptNet – Batch may be installed on Host PCs at warehouses, retail stores etc.

## **How it Works**

ITScriptNet – Batch comes in two levels:

ITScriptNet – Batch Developer – used to develop data collection programs and to upload programs from the PC to the terminal and download data from the terminal to the PC. The software is licensed on a per PC basis. A user may develop unlimited programs with a single Developer license that can be deployed in conjunction with Runtime licenses.

ITScriptNet – Batch Runtime – used as the communication server between the host PC and terminals. This software is also licensed by PC, meaning that every PC used to communicate with the terminals is required to be licensed. There is no limit as to the number of terminals that can communicate with the PC. There is no client licensing required on the terminal.

## **Application development and deployment example:**

Acme Widget Company has a large warehouse. They have 6 truck bays that are quite busy bringing in items that the Company holds in inventory. Management wishes to implement the latest technology to batch enter the receiving of product against a purchase order and update inventory levels.

The Company accepts a proposal for 10 terminals, ITScriptNet – Batch, and two ITScriptNet – Batch Runtimes. The Company registers the Developer license (serial number) on a PC in the IT department as IT will maintain the programs written by the solution provider (or write the programs themselves). The two Runtime licenses are registered on PC's near the truck bays that are tied into the network. All 10 of the terminals will be in operation at the same time. Each PC has several Homebases tied to it. Any of the 10 terminals can be downloaded at either of the PC's.

The Runtime contains the Download Utility that is required to run on the PC when communication between the PC and the terminals is needed. When product arrives the Company enters in the PO number from the packing list. The PO number is verified through a validation file that resides on the terminal. This validation file is updated automatically with each data download. If the PO is valid, the user will then see a list of items on the PO. The user can select one of the items or scan a bar code containing the item number. The quantity of items entered is compared to the quantity per the PO and a message is displayed to the user if the quantities do not match. The user will either accept, change or delete the quantity entered. If accepted the record of the receipt is transmitted to the host and the inventory levels are updated.

## **PC Server Requirements**

Microsoft Windows 98, Me, NT, 2000 or higher  
Minimum RAM: 16 MB (32 MB for Windows NT or 2000)  
Minimum hard drive space: 30 MB  
Screen resolution of 800 x 600 or higher  
Available serial/USB port for communication with terminals (optional)

## **Communication Requirements**

Dolphin 7200 – Serial cable or Homebase with cable is needed to initially load the client software.  
Dolphin 7300, 74xx, 95xx, and 79xx – Serial cable, or Mobile Intellibase, Mobile Intellibase +, USB Base with appropriate cable, and Microsoft ActiveSync are needed to initially load the client software.

Apex III/IV - The cradle uses a special serial cable with an RJ-45 connector at one end, and a standard DB-9 at the other. All serial communication is at 57600 Baud. Handshaking is not supported with this cradle.

MAT 203/204 - Serial communications, and USB over ActiveSync. All serial communication is at 57600 Baud.

PocketPC and WinCE devices – Serial cable or cradle and Microsoft ActiveSync are needed to initially load the client software.

## **Compatible Terminals**

All Configurations of Hand Held Products:

Dolphin 7200  
Dolphin 7300  
Dolphin 74xx  
Dolphin 95xx  
Dolphin 79xx

All Configurations of Compsee:

MAT 203/204  
Apex II/IV

All Pocket PC devices running Pocket PC 2002 and higher

All WinCE 3.0, 4.1, 4.2, .Net and higher devices running on ARM processors

## **How to Order**

To order ITScriptNet – Batch Developer and Runtime versions contact your Hand Held Products or Compsee product representative.

ITScriptNet – Batch Developer

\$ 995 Retail

This product will be shipped in a box containing: ITScriptNet – Batch Developer CD, User Guide, and (1) Developer PC license.

ITScriptNet – Batch Runtime

\$ 495 Retail

This product will be shipped in a box containing: ITScriptNet – Batch Runtime CD, User Guide, (1) Runtime license.

## **ITScriptNet – Batch Demo Version**

A demo version of Batch is available for download from the Z-Space web site ([www.z-space.com](http://www.z-space.com)). This demo is free and provides all the features and functionality of the full version with certain data collection limitations. The User Guide is available for downloading as well so

customers have the tools they need to create dynamic data collection software solutions and evaluate the rich features of Batch before purchasing it.

### **Application Support for ITScriptNet Products**

Highly trained application support personnel will assist customers with questions about ITScriptNet products. Please contact Z-Space's Application Support Team at (440) 899-7370, or by email at [support@z-space.com](mailto:support@z-space.com).

With questions regarding this **Product Information Letter**, please contact your Hand Held Products or Compsee Product Representative or:

Tim James  
Product Manager  
Phone: (440) 899-7370  
Fax: (440) 899-7897  
E-Mail: [tjames@z-space.com](mailto:tjames@z-space.com)

### **ITScriptNet – Batch FAQ's**

#### **Q: What products will be supported with Batch?**

**A:** All configurations of Hand Held Products:

Dolphin 7200

Dolphin 7300

Dolphin 74xx

Dolphin 95xx

Dolphin 79xx

All configurations of Compsee's:

MAT 203/204

Apex III/IV

All Pocket PC devices running Pocket PC 2002 and higher (with some scanner limitations)

And all WinCE devices running CE 3.0 and higher (with some scanner limitations)

#### **Q: Will the product be available for Europe, Latin America and Asia?**

**A:** ITScriptNet is available in Europe and Latin America. There are no plans as yet to enter the Asian market.

#### **Q: Can ITScriptNet create applications that support image capture?**

**A:** Yes, ITScriptNet - Batch Developer can create applications that enable end users to capture images with Hand Held Products Dolphin batch terminals equipped with image engines. Refer to the specific terminal sections that are a supplement to the ITScriptNet – Batch's User Guide for details.

#### **Q: Does ITScriptNet support RF terminals?**

**A:** ITScriptNet-Batch supports batch devices only. RF devices are supported in ITScriptNet – OMNI.

#### **Q: What are the capabilities and limitations of the demo version of ITScriptNet Developer?**

**A:** ITScriptNet demo version has all the features and functionalities of the ITScriptNet - Batch Developer. However, applications created with the demo version will only collect five records. Once the records are downloaded or deleted, the program will again be able to collect five

records.

**Q: Is a demo version of Batch available?**

**A:** A demo version of ITScriptNet - Batch can be downloaded from the Z-Space web site. Go to [www.z-space.com](http://www.z-space.com).

**Q: What is the price of Batch?**

**A:** Batch Developer retails for \$995, and the Runtime retails for \$495. Please consult your product representative for discounted pricing.

**Q: Do I need to purchase both the Developer and Runtime to have a complete design and communication solution?**

**A:** The Developer includes the Upload and Download utilities that allow you to upload programs from the PC to the terminal and to download collected data from the terminal to the PC. Therefore, it includes the Runtime components, therefore a separate Runtime license may not be needed. Certain solutions may require the purchase of a separate Runtime or several Runtimes if multiple PC's are required to be download stations, or the Developer needs to remain on a PC for design and maintenance purposes and downloading is needed at another PC.

**Q: What are the Ready-To-Go<sup>®</sup> programs?**

**A:** Your terminal may have come with certain ITScriptNet programs pre-loaded, or the programs and the demo version of ITScriptNet were included on the product CD. These programs are fully functioning data collection programs for asset tracking, inventory tracking and meter reading. These programs are ready to be used right out of the box. If used "as is", the programs will collect and download unlimited records without any licensing. In essence, the programs are free. If you need to modify the programs, you will need to purchase an ITScriptNet – Batch Developer license.