

# Set Windows Startup

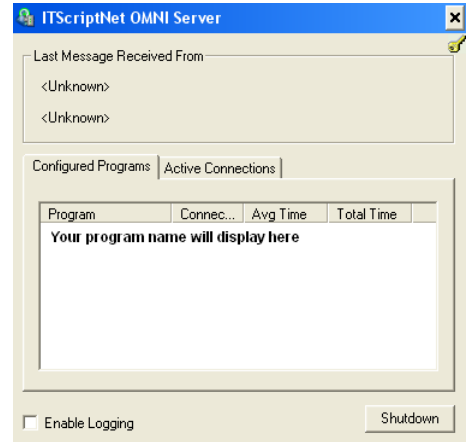
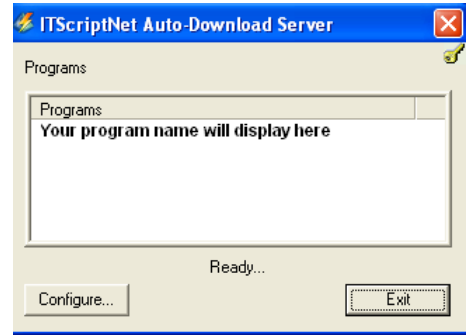
## Autodownload:

If you are running the Autodownload server, click on EXIT to stop the running Autodownload server on the computer.

Or

## Omni server:

If you are running the Omni server as an application in the Windows task tray, click on SHUTDOWN to stop the running Omni Server application on the computer.



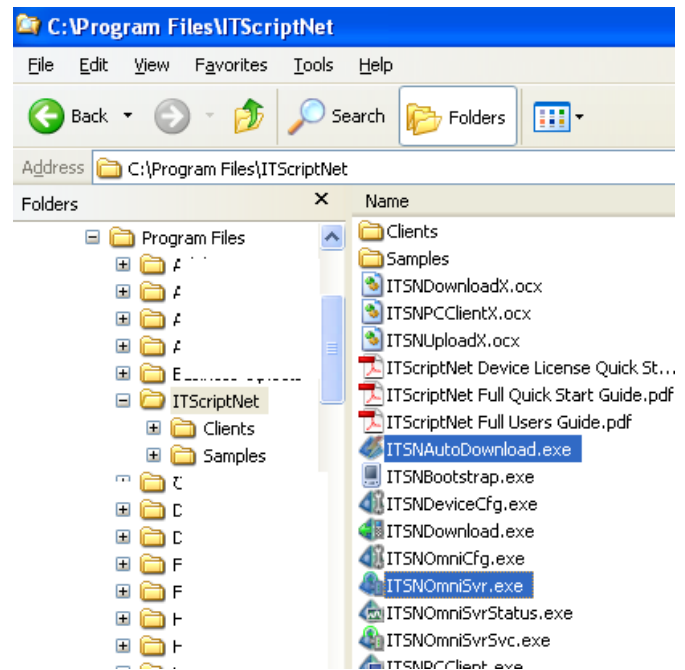
Use Windows Explore to navigate to the folder for your version of ITScriptNet:

C:\Program Files\ITScriptNet...

Right-click on the server file exe:

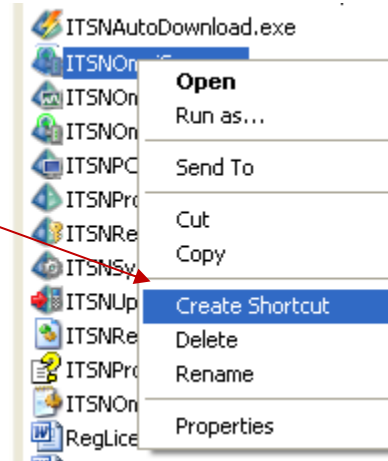
- For Autodownload: ITSNAutoDownload.exe
- For Omni server: ITSNOmniSvr.exe

In the menu, go down to and click on "Create Shortcut".

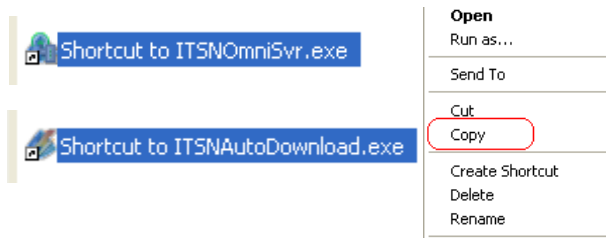


# Set Windows Startup

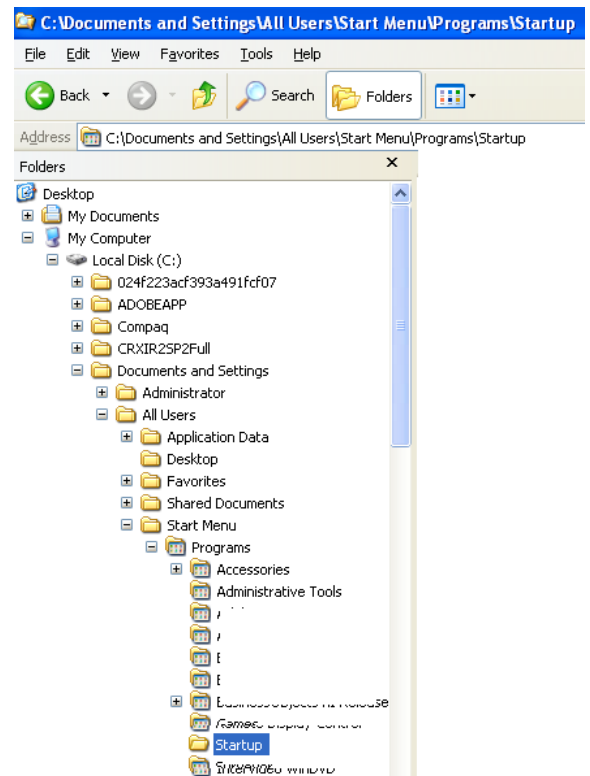
In the menu, click on "Create Shortcut".  
This will create a shortcut in the same folder.



For either Omni Server or Autodownload (whichever server you will be running, RIGHT-click on this new shortcut and select copy from the menu.



Use Windows Explore to navigate to the folder:  
C:\Documents and Settings\All Users\Start Menu\Programs\Startup.



Right-click on Startup, and PASTE. This will paste that new shortcut into the startup folder on this computer.

If the data collection program is modified, or if the configuration for Autodownload or Omni server is reset, always Exit or Shutdown the server and then re-start the servers from the Windows **Start button>All Programs>Startup> shortcut** to the server.

