

ActiveSync for Serial Communications

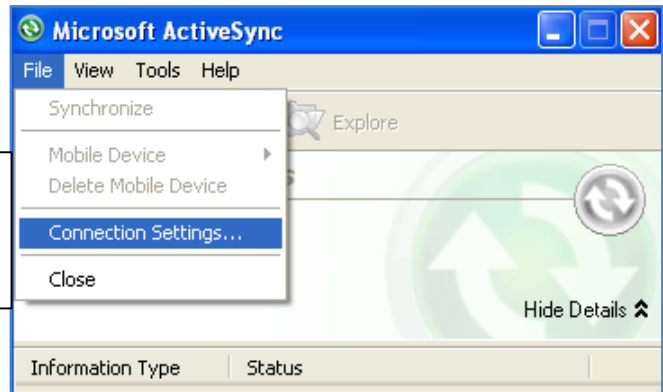


Note that certain devices, in particular the Unitech MT380 and MR650, use a serial connection to connect directly to a PC instead of a USB connection. ActiveSync defaults to allowing a USB connection, but requires the following steps to establish a Serial connection.

From your Windows task tray, select the ActiveSync icon (or if your Windows operating system is Vista, the Mobile Device Center icon).



Open the ActiveSync window to view the Connection Settings.

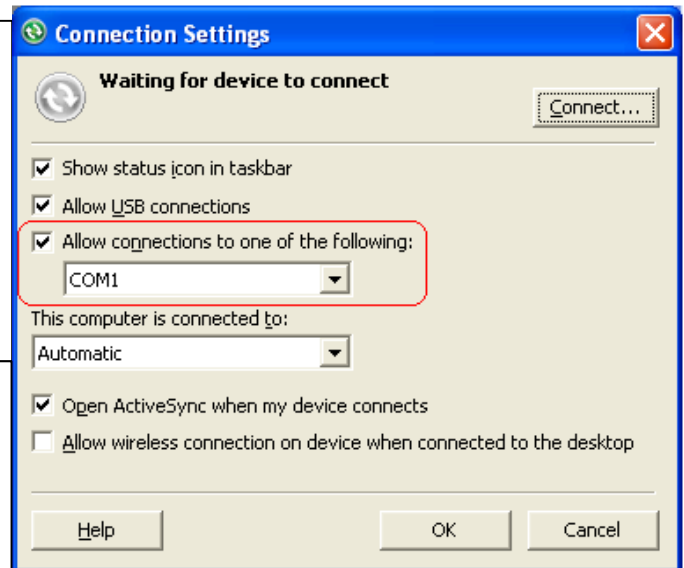


Make sure to check the box to "Allow connections to one of the following..."

Select the COM port for your connection to the mobile device.

Click on the Connect... button in the upper right of this window.

If the device does not connect within a few seconds, disconnect the serial cable from the computer, and reconnect it. You may need to reboot the device.



If an error message is displayed that the port is in use, make sure that you do not have any other software using the port. You may need to reboot your computer to clear the port.

