

Product Information Letter



OMNI™ - RF Data Collection Software

March 13, 2005

Introduction

Z-Space presents ITScriptNet® - OMNI RF Application Development data collection design and communication software. OMNI handles the program design and communications that allow the solution provider to concentrate on the integration challenges. OMNI brings the ITScriptNet user interface to wireless data collection. Use the flexibility and power of OMNI to build simple or complex RF data collection solutions quickly and easily.

Overview

OMNI has all of the design features of ITScriptNet - Batch Plus, including the Multi-Prompt design environment, along with offering solution designers a choice of three modes of data collection. OMNI offers an *RF* data collection mode where records can be collected and immediately transmitted to the OMNI server for processing over a wireless LAN using any of the Dolphins equipped with an 802.11b radio, or over a wireless WAN using any of the Dolphins equipped with a GSM/GPRS radio and having a proper service plan. The *Manual* data collection mode collects the data on the terminal until the user initiates the data transfer over a wireless or wired connection. *Hybrid* data collection mode provides the best of both *RF* and *Manual*! In Hybrid mode, the terminal attempts to send each record like RF, but will store the data and continue to collect additional data if a connection cannot be established. When the terminal is able to obtain a wireless connection, the collected data is sent automatically. These options make ITScriptNet - OMNI the one package for all of your data collection software needs.

OMNI offers many features to take advantage of the wireless connections to use remote validation files, remote data lookups, and even allowing the terminal to run a remote script on the server. Key features of OMNI reduce the number of roundtrips through the server, which means users spend more time collecting data and less time waiting for responses.

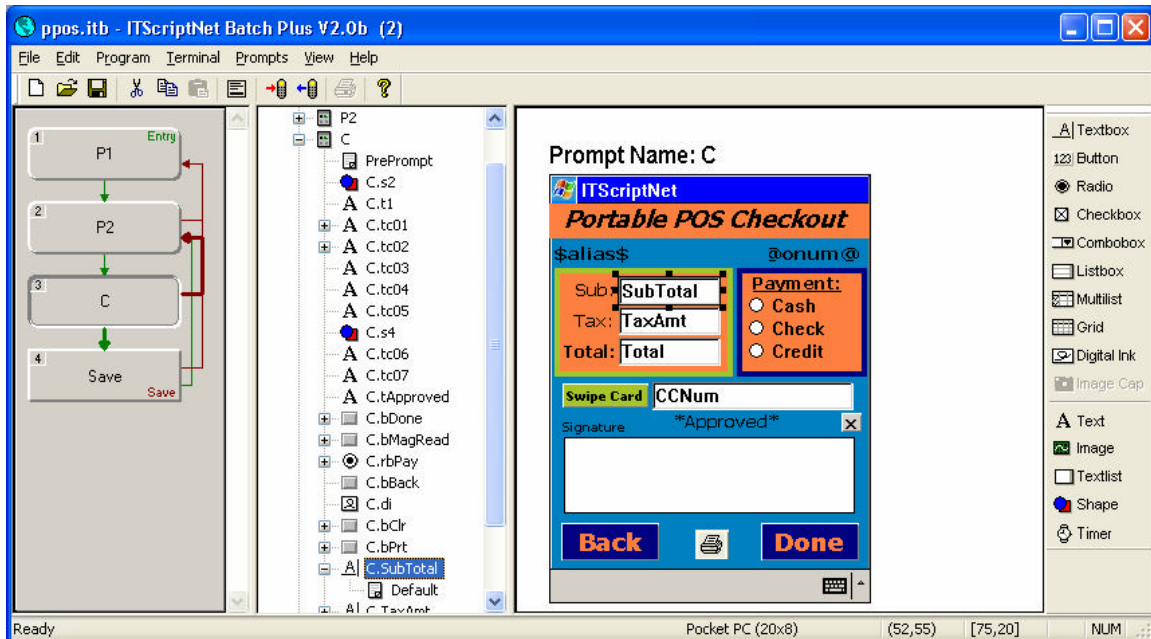
For those applications that require portable or wireless printing capability, OMNI offers functionality to print to a Bluetooth or 802.11b equipped printer.

Benefits and Features

Multi-Prompt

Multi-Prompt adds another level of design capability, and creativity, to ITScriptNet's user interface that allows the program designer to develop highly efficient and effective programs using:

- Textboxes
- Buttons (image & text)
- Radio buttons
- Checkboxes
- Comboboxes
- Listboxes
- Grids
- Digital Ink
- Image Capture
- Text font & size controls
- Logos and image files
- Shapes and colors



New Script functions

- **RemoteScript / RemoteScriptFile.** These functions execute a VBScript on the OMNI Server. You can specify the function and parameters to be passed.
- **RemoteSQL.** This function executes a SQL statement against an ODBC data source. The resulting record, if any, is returned.
- **SendCollectedData.** This function causes the terminal to send any collected records to the OMNI Server for processing via RF. This function can be used even if the data is being collected in batch mode.
- **CreateValidationRemote.** This function generates the validation file from the ODBC data source and uploads it to the terminal. You can specify match fields to create a filtered file.
- **And more ...**

Remote Validation Files

Input can be validated directly against data that is available through the host. Depending on the feature used the validation file either remains on the host or is uploaded to the terminal. A filtered version of the file can be created and pulled up to the terminal. This allows a hybrid mode of validation files, as you can periodically create an updated validation file on the terminal and then access it locally.

Collected Data and Database Lookups

The OMNI option in the Configure Receive options screen controls how collected data is processed:

RF - The user can require that the terminal establish an RF link when saving collected data or when performing a database lookup. The terminal will attempt to send the collected data to the host after every record. The data must be processed to the host or an error will result. If an error occurs the operator can retry or cancel. If cancel is selected, the collected data will be lost. If a

utility password has been set, the terminal will prompt for it before allowing the operator to cancel. This mode would generally be used when the user needs access to live data on a database server and cannot use potentially out-of-date data that would have been loaded earlier.

Hybrid (Quiet)

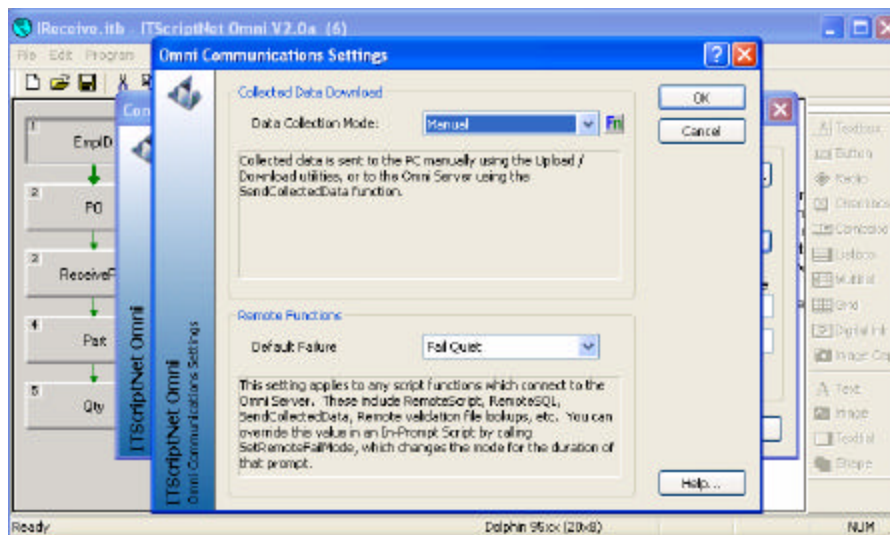
In the Hybrid (Quiet) data collection mode, each record of data that is collected is sent to the OMNI server for processing. If a wireless connection can be established, the data is sent. However, if the connection cannot be established the data is stored locally on the terminal and data collection continues. The user is not notified that the data could not be sent. The terminal will continue to try and establish the connection as more data is collected. When the connection is established, whatever data is stored will be sent to the OMNI Server for processing. The Hybrid mode is especially useful in situations where the wireless LAN coverage may not extend to the full area where data collection occurs. Data collection can continue without a wireless connection. When the terminal comes back within range to establish the connection, the data stored on the terminal is sent without interfering with the data collection process.

Hybrid has an added feature on the Windows CE and PocketPC terminals that will make an attempt to connect periodically (as defined in the data collection program) and send any accumulated data without interfering with the normal data collection process.

Hybrid (Retry)

The Hybrid (Retry) data collection mode is very similar to the Hybrid (Quiet) Mode except if the connection cannot be established the terminal will display the Retry/Cancel messages to the user. The user will be able to retry as many times as desired. If the user chooses to cancel, the input will be saved and regular data collection will resume. The terminal will continue to try and establish the connection as more data is collected. When the connection is established, whatever data is stored will be sent to the OMNI Server for processing.

Manual - Manual mode behaves very much like ITScriptNet Batch or Plus. All validation file lookups are against a local copy of the validation file, which is stored on the terminal, and all collected data is saved on the terminal to be downloaded later. All of these features work exactly the same way with OMNI. However, you can retrieve programs from the host and transfer collected data over the RF link while keeping the rest of the program Batch.



Separate Developer and Runtime Licenses

When purchasing ITScriptNet – OMNI Complete the OMNI Developer and Runtime components are licensed separately. This gives the customer the flexibility to license one PC with the

Developer to design programs and license another PC with the Runtime to manage the communication between the host and the terminals.

Save as Batch/Batch Plus

VAR's and developers no longer need to have all three ITScriptNet products. Design all of your programs with OMNI and save them to the lowest ITScriptNet edition (depending on features and functions used) in order to use the lowest cost Runtime. Note that OMNI specific features and functions will not work with Batch or Batch Plus, and Batch Plus specific features and functions will not work with Batch. Refer to the Features and Benefits matrix on the Z-Space web site, and to each edition's User Guide to determine if a program can operate properly if saved as Batch or Batch Plus.

Product Positioning

ITScriptNet – OMNI is positioned as a powerful program generator and communication server for 802.11b, Bluetooth and GSM/GPRS wireless solutions. The software's advanced features and functionality will optimize wireless automatic data collection solutions while minimizing development costs and deployment time. OMNI is designed to be used by VAR's, system integrators and end users. Though programming training and experience is not required for most areas of the software, experienced programmers will find the true power and endless possibilities within the software's scripting capabilities.

How it Works

ITScriptNet – OMNI consists of three (3) separate licensed software components:

ITScriptNet – OMNI Developer – used to develop data collection programs. The software is licensed on a per PC basis. A user may develop unlimited programs with a single Developer license that can be deployed in conjunction with Runtime and Client licenses.

ITScriptNet – OMNI Runtime – used as the communication server between a host PC and Client licensed terminals. This software is also licensed by PC, meaning that every PC used to communicate with the terminals is required to be licensed. These licenses are used in conjunction with Client licenses. There is only a practical limit as to the number of client licenses that can be registered with each Runtime.

ITScriptNet – OMNI Client - used to register terminals that are valid to communicate with a host PC. These licenses are used in conjunction with Runtime licenses. In a registered Runtime, there is a section that manages the Client licenses.

If the user has a 5-client license pack, for instance, this screen will show that there are 5 terminals allowed to communicate with the host, and the alias and MAC address of each terminal that is registered under the 5-client license. The user can remove terminals and add others at will, but only up to 5 terminals can be registered at a time. Note that terminal management is maintained on the PC. There is no serial number or other software to manage on the terminal.

Client license packs come in quantities of 5, 10, 25, 50, 75, 100, 250 or 500.

Application development and deployment example:

Acme Widget Company has a large warehouse. They have 6 truck bays that are quite busy bringing in items that the Company holds in inventory. Management wishes to implement the latest technology to wirelessly enter the receiving of product against a purchase order and update inventory levels.

The Company accepts a proposal for 10 terminals, several Access Points, ITScriptNet – OMNI Complete, and one ITScriptNet – OMNI Client 5-pack. OMNI Complete comes with a Developer license, a Runtime license and 5 Client licenses. The Company registers the Developer license (serial number) on a PC in the IT department as IT will maintain the programs written by the solution provider (or write the programs themselves). The Runtime license is registered on a PC near the truck bays that is tied in to the Access Points. All 10 of the terminals will be in operation at the same time. The Company registers the Client 5pack license received in the OMNI Complete package and also registers the separate Client 5-pack license. This will allow all 10 of the terminals to communicate with the server.

The Runtime contains the OMNI Communication Server and the Download Server that are required to run on the PC when communication between the PC and the terminals is needed. When product arrives the Company enters in the PO number from the packing list. The PO number is verified through a remote lookup from the terminal to the network through the host server. If the PO is valid, the user will then see a list of items on the PO. The user can select one of the items or scan a bar code containing the item number. The quantity of items entered is compared to the quantity per the PO and a message is displayed to the user if the quantities do not match. The user will either accept, change or delete the quantity entered. If accepted the record of the receipt is transmitted to the host and the inventory levels are updated.

PC Server Requirements

Microsoft Windows 98, Me, NT, 2000 or higher
Minimum RAM: 16 MB (32 MB for Windows NT or 2000)
Minimum hard drive space: 30 MB
Screen resolution of 800 x 600 or higher
Available serial/USB port for communication with terminals (optional)
Access Point for RF communication between host server and terminals (optional)

Communication Requirements

Dolphin 7200 – Serial cable or Homebase with cable is needed to initially load the client software.
Dolphin 7300, 74xx, 95xx, 79xx – Serial cable, or Mobile Intellibase, Mobile Intellibase +, USB Base with appropriate cable and Microsoft ActiveSync are needed to initially load the client software.
Apex III/IV - The cradle uses a special serial cable with an RJ-45 connector at one end, and a standard DB-9 at the other. All serial communication is at 57600 Baud. Handshaking is not supported with this cradle.
MAT 203/204 - Serial communications, and USB over ActiveSync. All serial communication is at 57600 Baud.
PocketPC and WinCE devices – Serial cable or cradle and Microsoft ActiveSync are needed to initially load the client software.

Compatible Terminals

All Configurations of HandHeld Products:

Dolphin 7200
Dolphin 7300
Dolphin 74xx
Dolphin 95xx
Dolphin 79xx

Compsee Products:

MAT 203/204
Apex II/IV

All Pocket PC devices running Pocket PC 2002 and higher
All WinCE 3.0, 4.1, 4.2, .Net and higher devices running on ARM processors

How to Order

To order ITScriptNet – OMNI versions contact your Hand Held Products or Compsee product representative.

ITScriptNet – OMNI Complete \$2,995 Retail
 This product will be shipped in a box containing: ITScriptNet – OMNI Complete CD, User Guide, Quick Start Guide, (1) Developer PC license, (1) Runtime license and (1) 5-client license pack.

ITScriptNet – OMNI Runtime \$1,495 Retail
 This product will be shipped in a box containing: ITScriptNet – OMNI Runtime CD, User Guide, (1) Runtime license and (1) 5-client license pack.

ITScriptNet – OMNI Client 5 license pack \$375 Retail
 ITScriptNet – OMNI Client 10 license pack \$700 Retail
 ITScriptNet – OMNI Client 25 license pack \$1,625 Retail
 ITScriptNet – OMNI Client 50 license pack \$3,000 Retail
 ITScriptNet – OMNI Client 75 license pack \$4,125 Retail
 ITScriptNet – OMNI Client 100 license pack \$5,000 Retail
 ITScriptNet – OMNI Client 250 license pack \$11,250 Retail
 ITScriptNet – OMNI Client 500 license pack \$20,000 Retail
 Client license packs will be shipped in a box containing: one (1) or a series of licenses (serial numbers) and an Installation Guide.

Upgrading from Batch or Batch Plus

At any time a license of one product may be upgraded to another. If you own an ITScriptNet-Batch or Batch Plus Developer license and wish to upgrade it to an OMNI Complete license contact your product representative to order the proper upgrade product. Below is a table of upgrade products and list pricing:

		<i>Price</i>	License(s) Received
Upgrade from Batch to OMNI:			
From Batch Developer to OMNI Complete		\$2,000 Retail	(1) OMNI Developer, (1) OMNI Runtime, (1) OMNI 5-pack Client
From Batch Runtime to OMNI Runtime		\$1,000 Retail	(1) OMNI Runtime, (1) OMNI 5-pack Client
Upgrade from Batch Plus to OMNI:			
From Batch Plus Developer to OMNI Complete		\$1,500 Retail	(1) OMNI Developer, (1) OMNI Runtime, (1) OMNI 5-pack Client
From Batch Plus Runtime to OMNI Runtime		\$ 800 Retail	(1) OMNI Runtime, (1) OMNI 5-pack Client

The upgrade process will cause the existing product to no longer function. For instances, if upgrading from Batch to OMNI the Batch product will no longer be licensed and will revert to being a Demo version.

Once the upgrade is registered you will need to load the OMNI client onto the terminal and re-save your data collection programs using a licensed OMNI Developer. This will make the programs compatible with the OMNI upgrade.

ITScriptNet – OMNI Demo Version

A demo version of OMNI is available for download from the Z-Space web site (www.z-space.com). This demo is free and provides all the features and functionality of the full version with certain data collection limitations. The User Guide is available for downloading as well so customers have the tools they need to create dynamic wireless data collection software solutions and evaluate the rich features of OMNI before purchasing it.

Application Support for ITScriptNet Products

Highly trained application support personnel will assist customers with questions about ITScriptNet products. Please contact Z-Space's Application Support Team at (440) 899-7370, or by email at support@z-space.com.

With questions regarding this **Product Information Letter**, please contact your Hand Held Products or Compsee Product Representative or:

Tim James
Product Manager
Phone: (440) 899-7370
Fax: (440) 899-7897
E-Mail: tjames@z-space.com

ITScriptNet – OMNI FAQ's

Q: What products will be supported with OMNI?

A: All Configurations of HandHeld Products:

Dolphin 7200

Dolphin 7300

Dolphin 74xx

Dolphin 95xx

Dolphin 79xx

All configurations of Compsee's:

MAT 203/204

Apex III/IV

All Pocket PC devices running Pocket PC 2002 and higher (with some scanner limitations)

All WinCE 3.0, 4.1, 4.2, .Net and higher devices running on ARM processors

(with some scanner limitations)

Q: What wireless communication methods will OMNI support?

A: Terminals can communicate with a host server via 802.11b, Bluetooth and GPRS. Properly equipped terminals can communicate with Bluetooth and 802.11b equipped printers.

Q: What do I need to buy to write my own programs and have 10 RF terminals at Bldg A and 5 RF terminals at Bldg B communicating with my server?

A: You will need to purchase one ITScriptNet-OMNI Complete package, which includes one Developer license, one Runtime license (host server) and one 5-pack Client license, an additional 5-pack Client license and an additional Runtime license. The Developer license can be registered only once on any one PC. The Runtime license can be registered on a single PC that can be a different PC than the one on which the Developer is licensed. The 5-pack Client license must be registered on the same PC as a Runtime license. If all 10 terminals at Bldg A will communicate with a single host PC, then the additional 5-pack Client license will also need to be registered on the PC with the Runtime license for a total of 10 clients.

Bldg B would require the additional Runtime license, which includes a host server and a 5-pack Client license. The list cost would be \$2,995 for ITScriptNet-OMNI Complete, \$1,495 for ITScriptNet-OMNI Runtime and \$375 for ITScriptNet-OMNI 5-pack Client for a total cost of \$4,865.

Q: I have dead spots in my warehouse where I cannot get a signal from my AccessPoint. Can I still collect data in these areas and transmit the data when I am back in range?

A: Using the Hybrid option for the OMNI communication mode you can have your terminal save each record to the server when a connection is present, but save the record locally on the terminal if a connection is not present. The locally saved data will be transmitted the next time a record is saved with a connection or within 30 seconds of re-establishing a connection.

Q: Can I upgrade from ITScriptNet-Batch or Batch Plus?

A: There are products that will take an existing Batch or Batch Plus Developer or Runtime license and upgrade them to an OMNI Generator or Runtime license. Contact your product representative to purchase the appropriate upgrade license. Be sure to tell them which ITScriptNet version you currently own. The upgrade price is the difference between the OMNI price and the Batch or Batch Plus price.

Q: How do I change which terminals can communicate with the OMNI host server?

A: The OMNI Download Configuration utility on the PC manages the registration of the Client licenses and the terminals that are permitted to communicate with the OMNI host server. The user can add and delete terminals from the list as long as the maximum number of terminals does not exceed the total number of Clients for which a license or licenses have been purchased.

Q: Is a demo version of OMNI available?

A: A demo version of ITScriptNet-OMNI can be downloaded from the Z-Space web site. Go to www.z-space.com.